

Hydropower systems

ADVANCED MODELLING & SIMULATION – AMS –

WWW.POYRY.COM/AMS; WWW.TRANSAT-CFD.COM; AMS@POYRY.COM

JANUARY 2020

Hydropower Systems

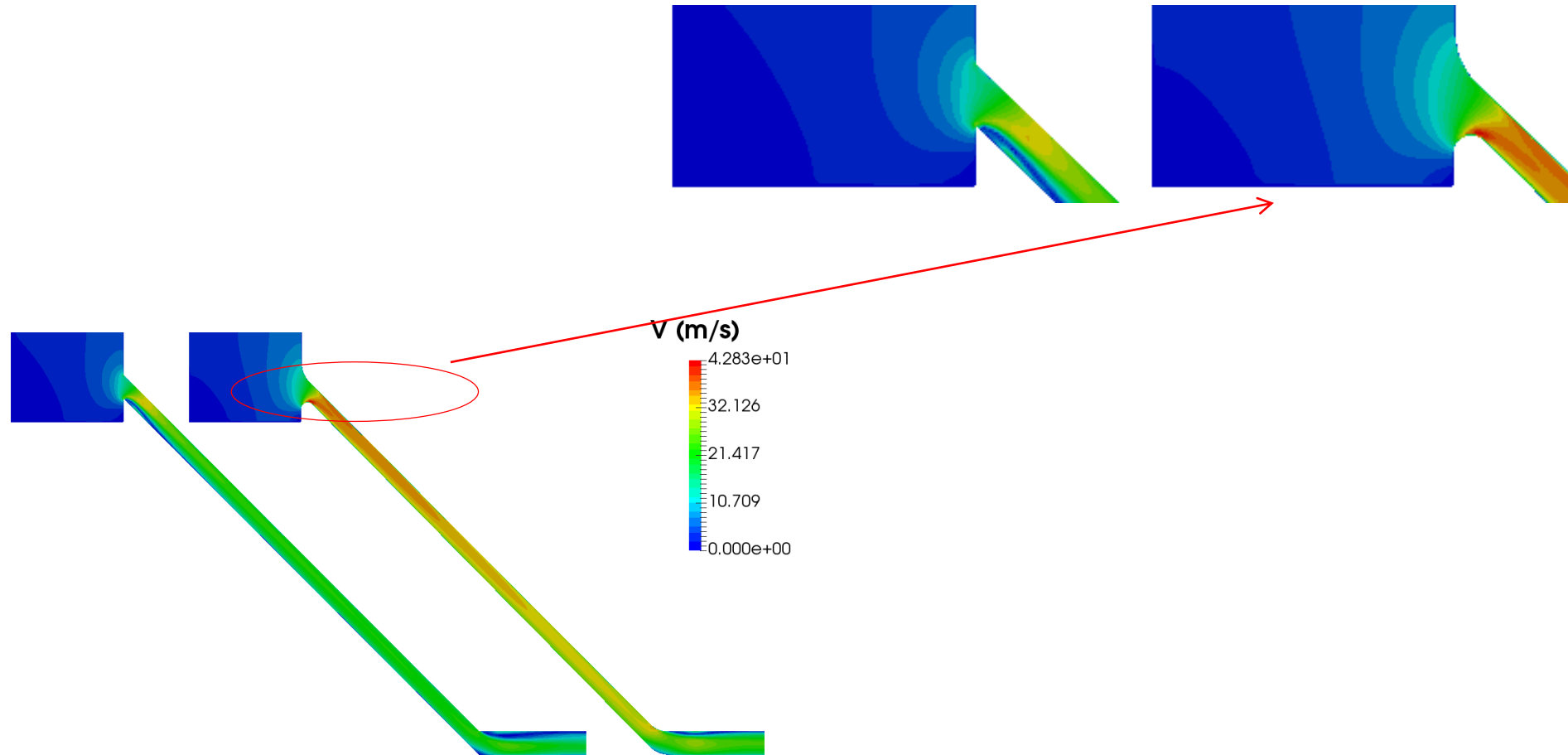
LARGE HEAD EXAMPLE (30M OF PIPE + 10M OF RESERVOIR): INLET AND BOTTOM SHAPE

Hydropower channel intake retrofitting



LARGE HEAD EXAMPLE (30M OF PIPE + 10M OF RESERVOIR): INLET AND BOTTOM SHAPE

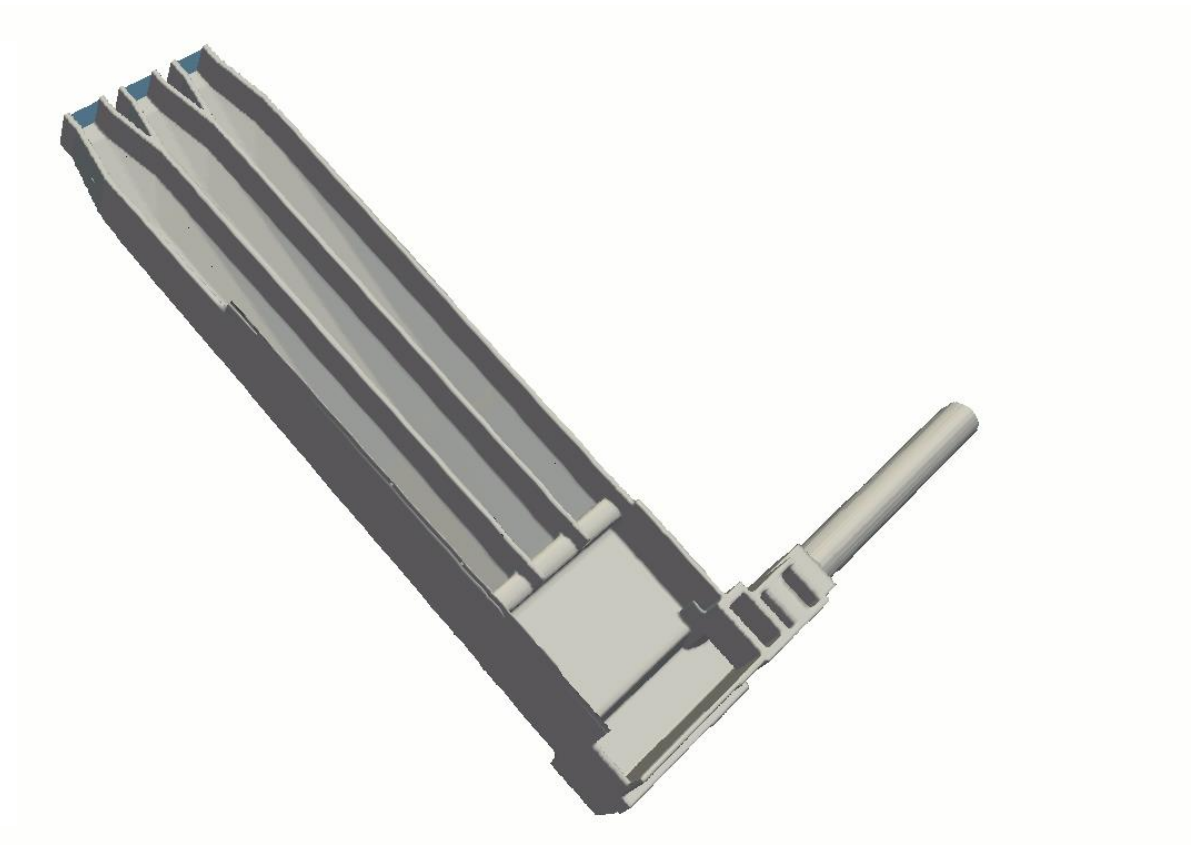
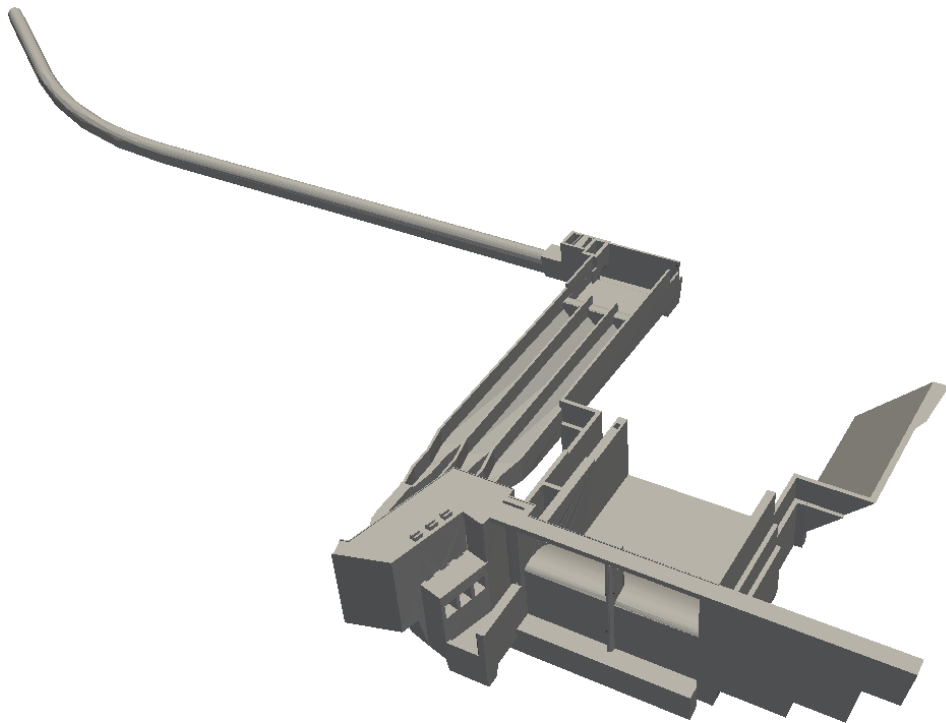
Hydropower channel intake retrofitting



Trans**AT**

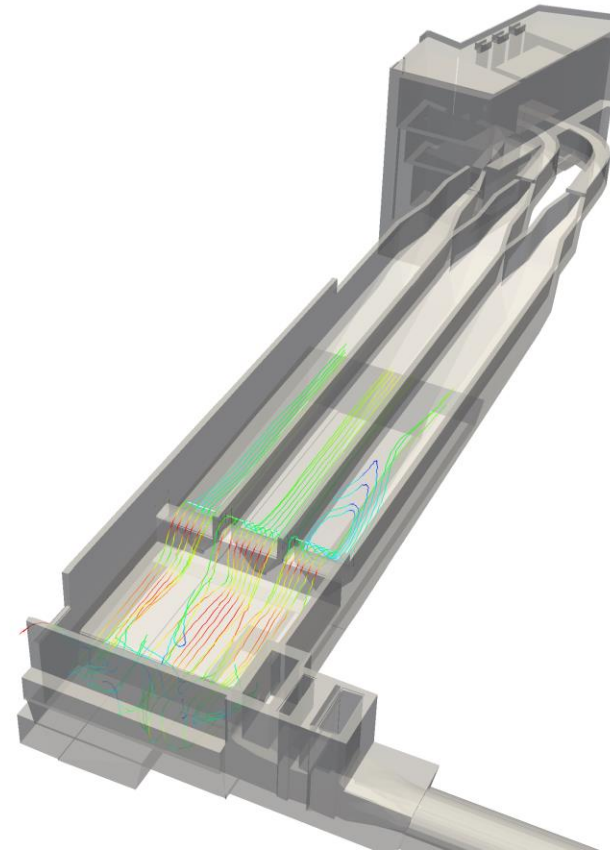
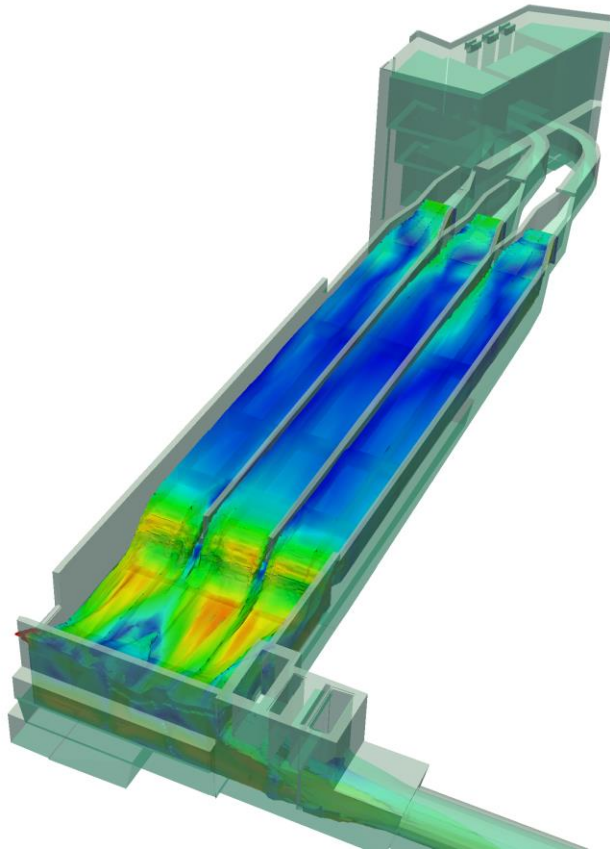
NA-DAM INTAKE (LAOS)

Hydropower channel intake design



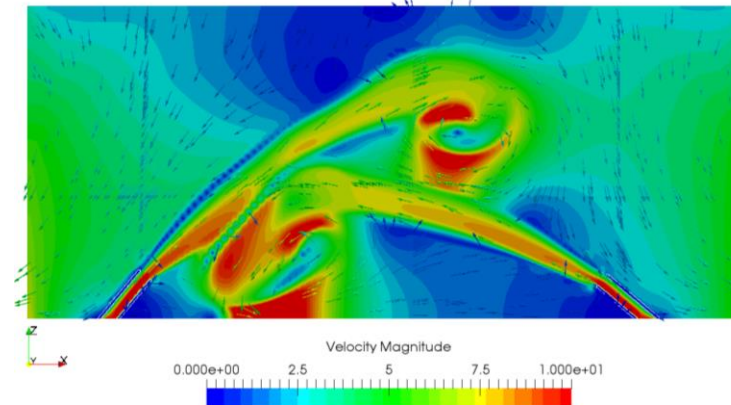
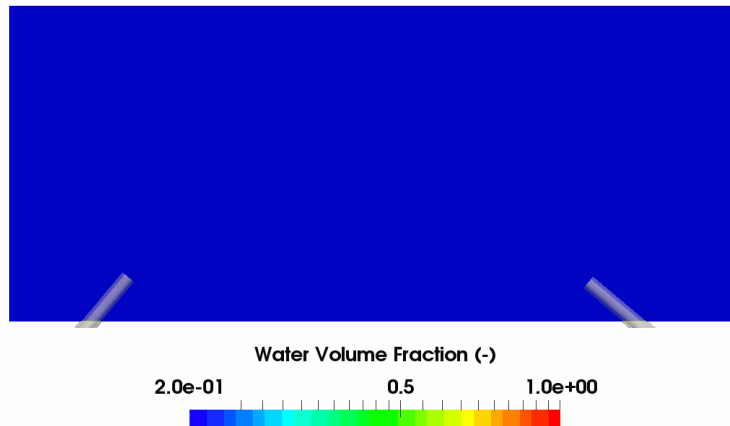
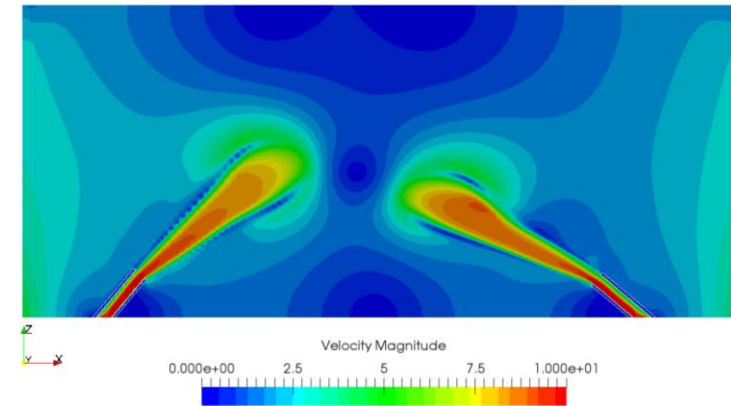
NA-DAM INTAKE (LAOS)

Hydropower channel intake design



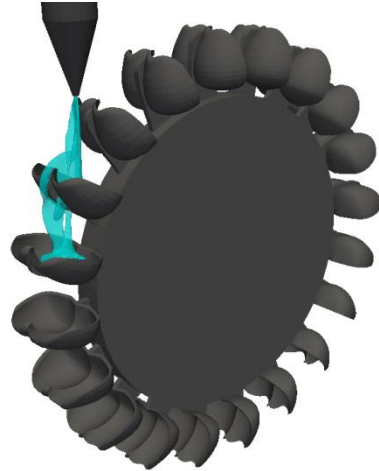
TWO PIPES ~ 6 M APART INJECTING WATER @ 5M/S, PIPE INCLINATIONS $\sim 40^\circ$ AND $\sim 30^\circ$.

Energy dissipation with Water-jet collision

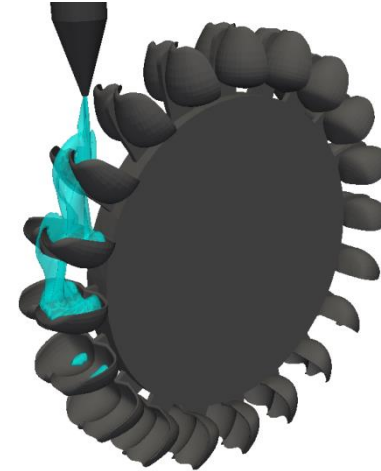


SIMULATION WITH FREE SURFACE MODEL

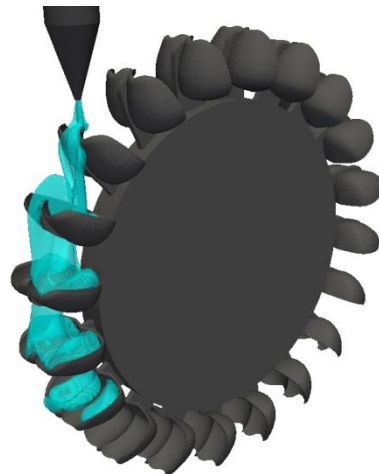
Water flow in a Pelton turbine



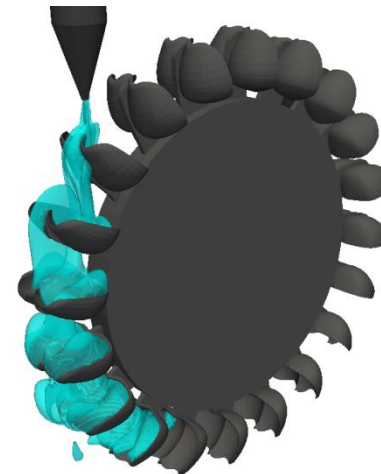
Trans**AT**



Trans**AT**



Trans**AT**



Trans**AT**



Making Future

- Advanced Modelling & Simulation
- www.poyry.com/ams; ams@poyry.com